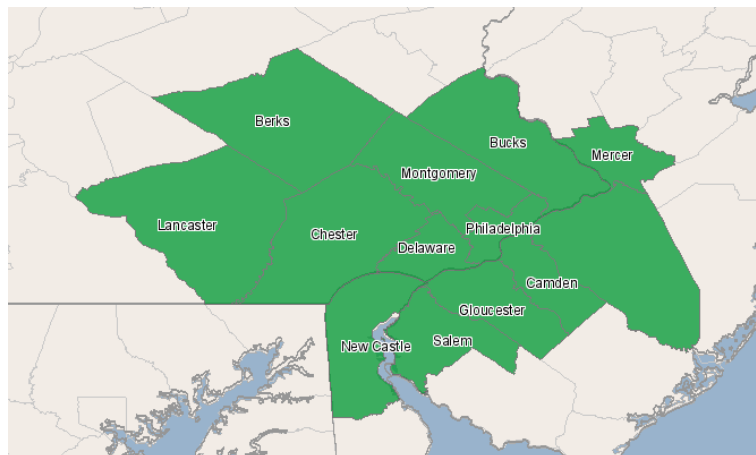


# Lancaster County Workforce Investment Board

313 W. Liberty Street  
Lancaster, Pennsylvania 17603  
717.735.0333

## Regional Staffing Patterns Report



## Region Info

Region: Delaware Valley Innovation Network

Counties: New Castle, DE (10003), Burlington, NJ (34005), Camden, NJ (34007), Gloucester, NJ (34015), Mercer, NJ (34021), Salem, NJ (34033), Berks, PA (42011), Bucks, PA (42017), Chester, PA (42029), Delaware, PA (42045), Lancaster, PA (42071), Montgomery, PA (42091), Philadelphia, PA (42101)

## Mapping Generated for Industries:

NAICS Code	Description
32541	Pharmaceutical and medicine manufacturing

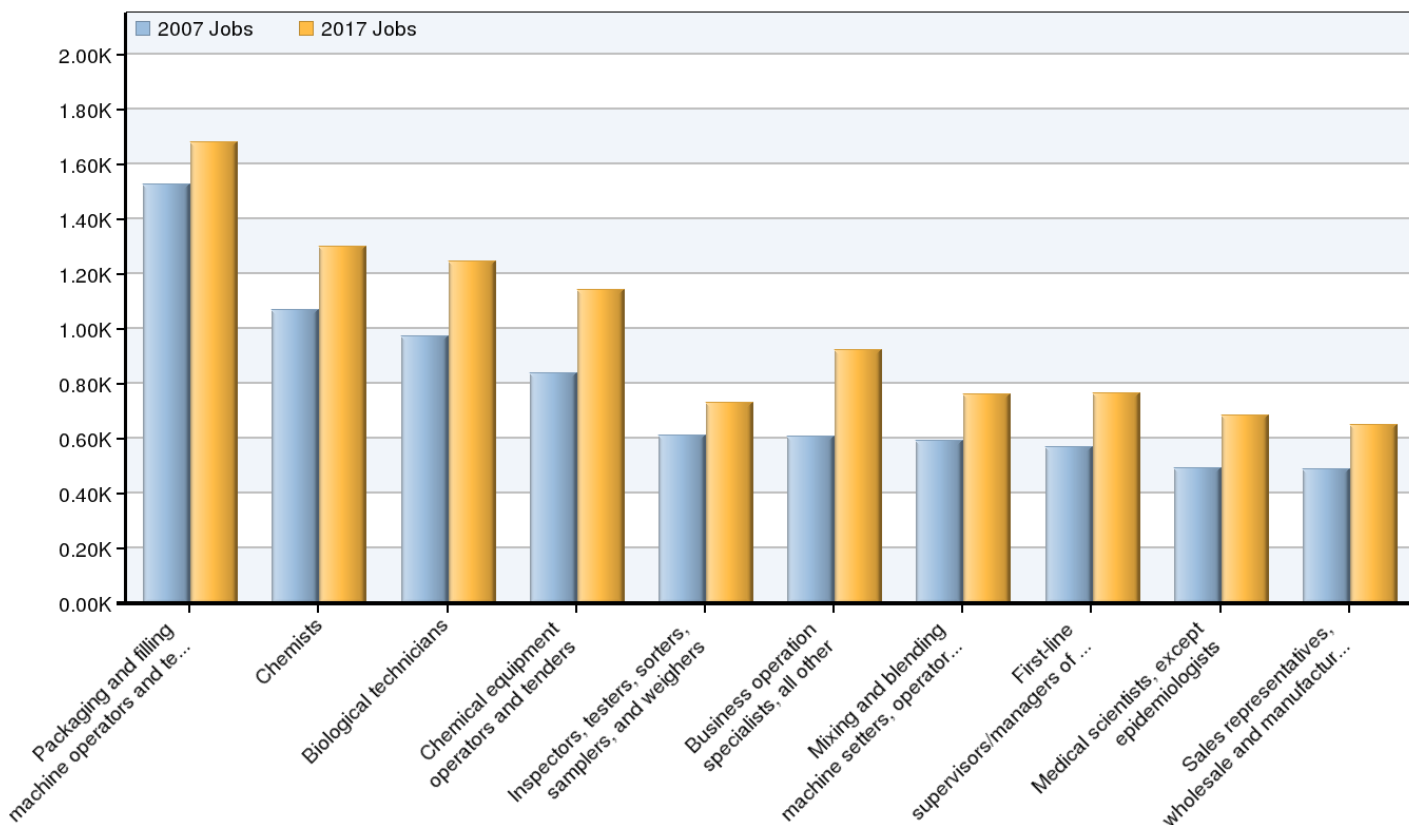
## Fastest Changing Occupations

SOC Code	Description	Change
13-1199	Business operation specialists, all other	317
51-9011	Chemical equipment operators and tenders	305
19-4021	Biological technicians	273
19-2031	Chemists	231
51-1011	First-line supervisors/managers of production and operating workers	196
19-1042	Medical scientists, except epidemiologists	191
51-9023	Mixing and blending machine setters, operators, and tenders	167
41-4011	Sales representatives, wholesale and manufacturing, technical and scientific products	163
51-9111	Packaging and filling machine operators and tenders	154
15-1051	Computer systems analysts	142

SOC Code	Description	% Change
15-1081	Network systems and data communications analysts	74%
15-1031	Computer software engineers, applications	62%
19-1029	Biological scientists, all other	62%
15-1032	Computer software engineers, systems software	60%
51-9051	Furnace, kiln, oven, drier, and kettle operators and tenders	55%
51-9021	Crushing, grinding, and polishing machine setters, operators, and tenders	55%
17-2141	Mechanical engineers	53%
15-1071	Network and computer systems administrators	53%
13-1199	Business operation specialists, all other	52%
13-1079	Human resources, training, and labor relations specialists, all other	52%

Source: EMSI Complete Employment -

# Occupational Makeup



SOC Code	Description	2007 Jobs	2017 Jobs	Change	% Change	% of Industry
51-9111	Packaging and filling machine operators and tenders	1,528	1,681	154	10%	7%
19-2031	Chemists	1,069	1,300	231	22%	5%
19-4021	Biological technicians	973	1,246	273	28%	5%
51-9011	Chemical equipment operators and tenders	839	1,144	305	36%	4%
51-9061	Inspectors, testers, sorters, samplers, and weighers	612	732	120	20%	3%
13-1199	Business operation specialists, all other	607	925	317	52%	3%
51-9023	Mixing and blending machine setters, operators, and tenders	594	761	167	28%	3%
51-1011	First-line supervisors/managers of production and operating workers	570	766	196	34%	3%
19-1042	Medical scientists, except epidemiologists	492	683	191	39%	2%
41-4011	Sales representatives, wholesale and manufacturing, technical and scientific products	489	652	163	33%	2%
49-9041	Industrial machinery mechanics	416	546	130	31%	2%
49-9042	Maintenance and repair workers, general	413	550	138	33%	2%
43-6014	Secretaries, except legal, medical, and executive	397	446	49	12%	2%
19-4031	Chemical technicians	368	475	107	29%	2%
51-2092	Team assemblers	334	455	121	36%	2%
19-1021	Biochemists and biophysicists	322	347	25	8%	2%
51-8091	Chemical plant and system operators	321	437	116	36%	1%
53-7062	Laborers and freight, stock, and material movers, hand	310	377	67	21%	1%
15-1051	Computer systems analysts	295	437	142	48%	1%
11-3051	Industrial production managers	294	396	102	35%	1%
11-9121	Natural sciences managers	289	391	101	35%	1%
11-9199	Managers, all other	285	388	104	36%	1%
19-3021	Market research analysts	282	379	97	34%	1%
51-9198	Helpers--Production workers	266	364	98	37%	1%

43-6011	Executive secretaries and administrative assistants	262	330	69	26%	1%
17-3026	Industrial engineering technicians	255	332	77	30%	1%
13-2011	Accountants and auditors	246	329	83	34%	1%
53-7064	Packers and packagers, hand	231	301	71	31%	1%
43-5061	Production, planning, and expediting clerks	229	302	73	32%	1%
13-1073	Training and development specialists	221	294	73	33%	1%

Source: EMSI Complete Employment -

## **Data Sources and Calculations**

### **Occupation Data**

Organizing regional employment information by occupation provides a workforce-oriented view of the regional economy. EMSI's occupation data are based on EMSI's industry data and regional staffing patterns taken from the Occupational Employment Statistics program (U.S. Bureau of Labor Statistics). Wage information is partially derived from the American Community Survey. The occupation-to-program (SOC-to-CIP) crosswalk is based on one from the U.S. Department of Education, with customizations by EMSI.

### **Industry Data**

In order to capture a complete picture of industry employment, EMSI basically combines covered employment data from Quarterly Census of Employment and Wages (QCEW) produced by the Department of Labor with total employment data in Regional Economic Information System (REIS) published by the Bureau of Economic Analysis (BEA), augmented with County Business Patterns (CBP) and Nonemployer Statistics (NES) published by the U.S. Census Bureau. Projections are based on the latest available EMSI industry data combined with past trends in each industry and the industry growth rates in national projections (Bureau of Labor Statistics) and states' own projections, where available.

### **State Data Sources**

This report uses state data from the following agencies: Delaware Office of Occupational and Labor Market Information, Delaware Wages 2004; New Jersey Department of Labor and Workforce Development; Pennsylvania Department of Labor and Industry, Center for Workforce Information and Analysis.