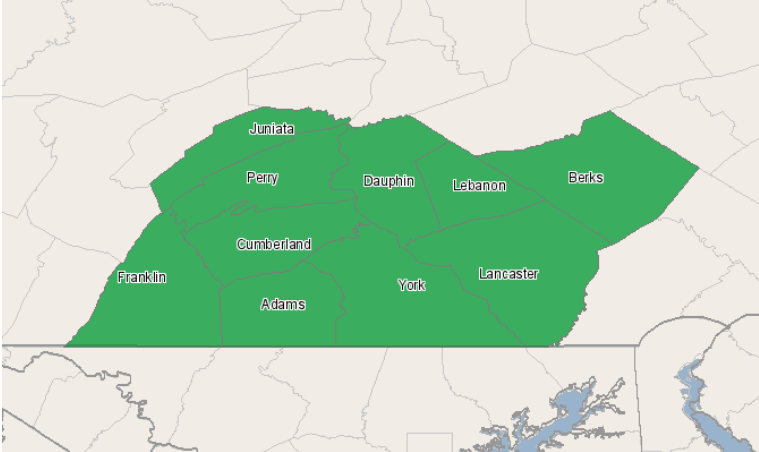


# Lancaster County Workforce Investment Board

313 W. Liberty Street  
Lancaster, Pennsylvania 17603  
717.735.0333

## Gap Analysis Report

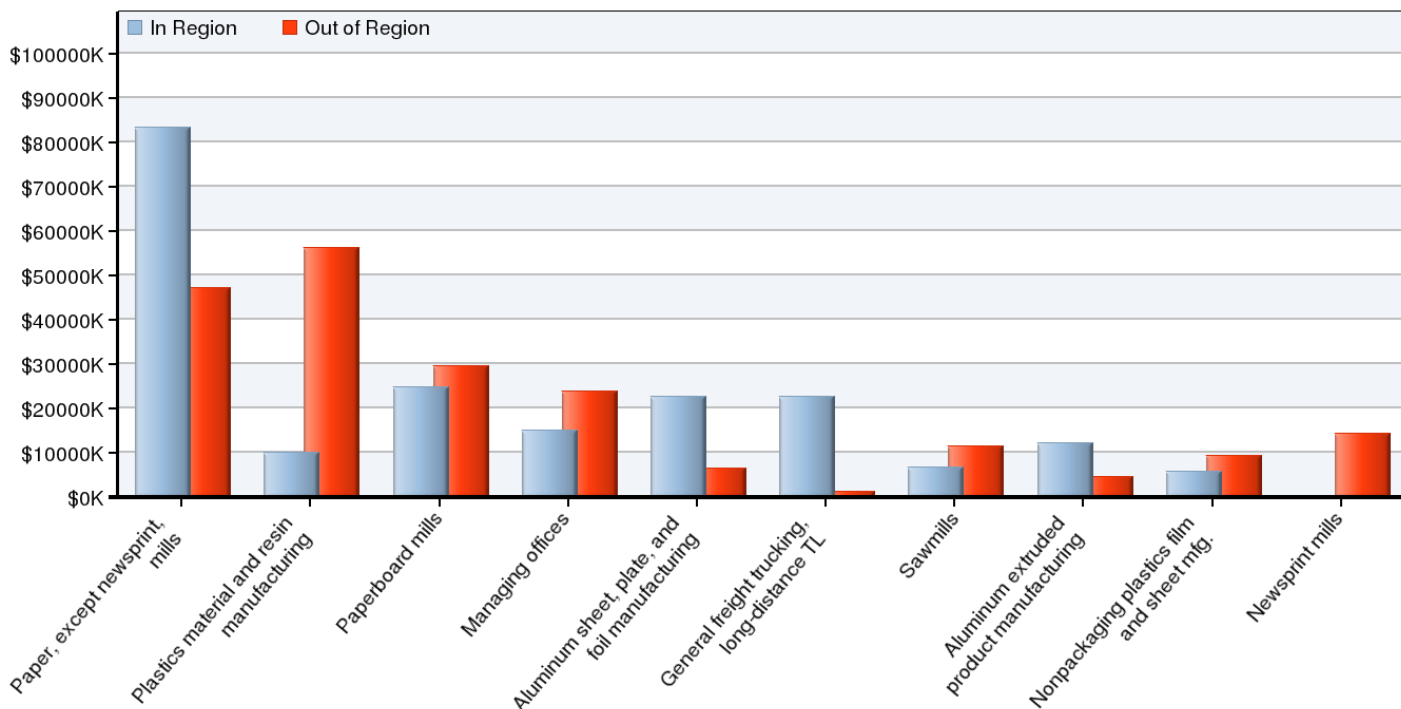


## Region Info

Region: South Central PA Region

Counties: Adams, PA (42001), Berks, PA (42011), Cumberland, PA (42041), Dauphin, PA (42043), Franklin, PA (42055), Juniata, PA (42067), Lancaster, PA (42071), Lebanon, PA (42075), Perry, PA (42099), York, PA (42133)

## 2006 Requirements for: Packaging Materials



| NAICS Code | Description                                   | Total Requirements (K) | % Satisfied in Region | % Satisfied out of Region |
|------------|---|------------------------|-----------------------|---------------------------|
| 322121     | Paper, except newsprint, mills                | \$130,556              | 64%                   | 36%                       |
| 325211     | Plastics material and resin manufacturing     | \$66,231               | 15%                   | 85%                       |
| 322130     | Paperboard mills                              | \$54,355               | 46%                   | 54%                       |
| 551114     | Managing offices                              | \$38,753               | 39%                   | 61%                       |
| 331315     | Aluminum sheet, plate, and foil manufacturing | \$29,169               | 78%                   | 22%                       |
| 484121     | General freight trucking, long-distance TL    | \$23,869               | 95%                   | 5%                        |
| 321113     | Sawmills                                      | \$18,195               | 37%                   | 63%                       |
| 331316     | Aluminum extruded product manufacturing       | \$16,629               | 73%                   | 27%                       |
| 326113     | Nonpackaging plastics film and sheet mfg.     | \$15,165               | 38%                   | 62%                       |
| 322122     | Newsprint mills                               | \$14,366               | 0%                    | 100%                      |
| 331111     | Iron and steel mills                          | \$13,956               | 84%                   | 16%                       |
| 425120     | Wholesale trade agents and brokers            | \$12,436               | 95%                   | 5%                        |
| 484110     | General freight trucking, local               | \$11,613               | 95%                   | 5%                        |
| 324110     | Petroleum refineries                          | \$11,544               | 41%                   | 59%                       |
| 484122     | General freight trucking, long-distance LTL   | \$10,984               | 95%                   | 5%                        |
| 325910     | Printing ink manufacturing                    | \$10,873               | 27%                   | 73%                       |
| 541990     | All other professional and technical services | \$10,835               | 95%                   | 5%                        |
| 322291     | Sanitary paper product manufacturing          | \$9,502                | 1%                    | 99%                       |
| 322211     | Corrugated and solid fiber box manufacturing  | \$9,491                | 78%                   | 22%                       |
| 326111     | Plastics bag manufacturing                    | \$7,691                | 57%                   | 43%                       |
| 522110     | Commercial banking                            | \$7,630                | 24%                   | 76%                       |
| 332431     | Metal can manufacturing                       | \$6,290                | 70%                   | 30%                       |
| 484220     | Other specialized trucking, local             | \$6,180                | 95%                   | 5%                        |
| 423430     | Computer and software merchant wholesalers    | \$5,911                | 51%                   | 49%                       |

|        |   |         |     |      |
|--------|---|---------|-----|------|
| 482111 | Line-haul railroads                           | \$5,576 | 37% | 63%  |
| 423830 | Industrial machinery merchant wholesalers     | \$5,284 | 95% | 5%   |
| 325199 | All other basic organic chemical mfg.         | \$4,954 | 7%  | 93%  |
| 332710 | Machine shops                                 | \$4,683 | 73% | 27%  |
| 326199 | All other plastics product manufacturing      | \$4,571 | 69% | 31%  |
| 221112 | Fossil fuel electric power generation         | \$4,560 | 20% | 80%  |
| 541710 | Physical, engineering and biological research | \$4,477 | 3%  | 97%  |
| 332439 | Other metal container manufacturing           | \$4,294 | 53% | 47%  |
| 424210 | Druggists' goods merchant wholesalers         | \$4,042 | 54% | 46%  |
| 334413 | Semiconductors and related device mfg.        | \$3,956 | 0%  | 100% |
| 484230 | Other specialized trucking, long-distance     | \$3,823 | 76% | 24%  |
| 221122 | Electric power distribution                   | \$3,789 | 52% | 48%  |
| 811111 | General automotive repair                     | \$3,448 | 95% | 5%   |
| 423690 | Other electronic parts merchant wholesalers   | \$3,374 | 26% | 74%  |
| 423450 | Medical equipment merchant wholesalers        | \$3,204 | 47% | 53%  |
| 424410 | General line grocery merchant wholesalers     | \$3,202 | 95% | 5%   |
| 424490 | Other grocery product merchant wholesalers    | \$3,158 | 95% | 5%   |
| 322110 | Pulp mills                                    | \$3,157 | 0%  | 100% |
| 326112 | Plastics packaging film and sheet mfg.        | \$3,119 | 28% | 72%  |
| 541330 | Engineering services                          | \$3,100 | 2%  | 98%  |
| 325991 | Custom compounding of purchased resins        | \$3,057 | 26% | 74%  |
| 811310 | Commercial machinery repair and maintenance   | \$3,036 | 95% | 5%   |
| 322212 | Folding paperboard box manufacturing          | \$2,810 | 13% | 87%  |
| 332116 | Metal stamping                                | \$2,807 | 68% | 32%  |
| 484210 | Used household and office goods moving        | \$2,750 | 38% | 62%  |
| 811121 | Automotive body and interior repair           | \$2,547 | 94% | 6%   |

Source: EMSI Complete Employment -

Note: Requirements less than \$1K are not shown.

## **Data Sources and Calculations**

### **Input-Output Data**

The input-output model in this report is created using the national Input-Output matrix provided by the federal Bureau of Economic Analysis. This is combined with the national Total Gross Output, the regional Total Gross Output, the land area of the subject region, regional DIRT data and regional in/out commuter patterns in order to calculate regional requirements, imports and exports. After using matrix algebra to calculate the regional multiplier, the resulting matrix is multiplied by the sales vector and converted back to jobs or earnings. Specifically, this data comes from the U.S. Department of Commerce, Bureau of Economic Analysis, Industry Economic Accounts: Benchmark & Annual Input-Output (I-O) Accounts.

### **State Data Sources**

This report uses state data from the following agencies: Pennsylvania Department of Labor and Industry, Center for Workforce Information and Analysis.